



# Carrickfergus Model Primary School

"Aspiring to learn, care and grow together."



## Term 2: January Newsletter 2026

Dear Parents / Carers,



Happy New Year and thank you for your patience at the start of the week as the weather stilted our start back. I appreciate it is really hard getting back to normal after Christmas but the children have done really well.

A huge thank you to PTA Parents, volunteers, P7 pupils and staff for a well attended Open Day. There were lovely comments from our visitors about our P7 pupils which was a very proud moment for us as a school.

As we navigate P1 Admissions for this year we also await the SEAG results for our Primary 7 pupils; choosing their next school is a big moment for them. We also have plenty of visitors and special days in various year groups so do look out for those. A massive welcome back to Mrs Hanratty after her maternity leave!

Also look out for our new 'Zen Den' which is progressing very well and will be usable soon, all thanks to PTA funding and volunteers.

*Mrs J Miller*  
Principal



### January onwards

Shared Education Visits and Projects in various classes

### Tuesday 13<sup>th</sup> January

PSNI with P7 pupils and parents regarding safe phone use / NI Water Visit to Primary 3

### Friday 16<sup>th</sup> January

100 Days of School Special Day in Primary 2

### Monday 19<sup>th</sup> January

After-schools begin

### Wednesday 21<sup>st</sup> January

Primary 1 Admissions Close

### Saturday 24<sup>th</sup> January

SEAG Results to P7

### Monday 26<sup>th</sup> January

Dairy Council Visit to Primary 5 and Primary 6

### Tuesday 27<sup>th</sup> January

Year 8 Applications open for Primary 7 parents

### Thursday 29<sup>th</sup> January

P1 Health Checks start

### Friday 30<sup>th</sup> January

PTA NEON Dress-up day

### Monday 2<sup>nd</sup> February - Friday 6<sup>th</sup> February

Parent Interview Week  
Pupils Finish at 1.45pm Monday 2<sup>nd</sup> - Thursday 5<sup>th</sup> and 12 Noon on Friday 6<sup>th</sup> February

### Monday 9<sup>th</sup> February - Friday 13<sup>th</sup> February

Half-Term

### Monday 16<sup>th</sup> and Tuesday 17<sup>th</sup> February

School Photographer for all pupils

### Thursday 19<sup>th</sup> February

Year 8 Applications Close

### Monday 16<sup>th</sup> March

School Closure: SDD

### Tuesday 17<sup>th</sup> March

School Closure: St Patrick's Day

## REMINDERS PLEASE

- Schools starts at 8.45am each day. Persistent lateness will be addressed due to the disruption that is caused to the pupils involved and their class.
- Governors strongly discourage ear-rings and NO ear-rings should be worn on PE days.
- PE kit should be proper trainers rather than converse type shoes / boots please for ankle support.
- During pick-up at the back gate younger children should stay with their parents/carers behind the white line rather than running around the playground to keep the area clear. THANK YOU!

## NEW PTA WHATSAPP BROADCAST GROUP

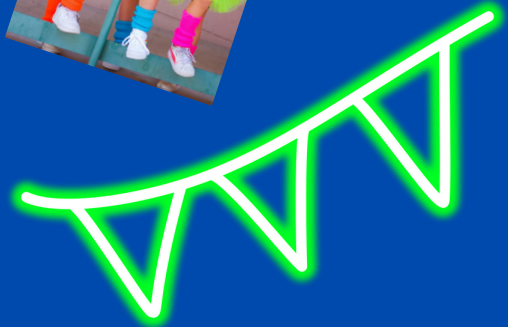
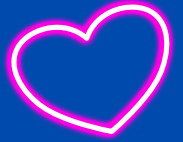


### DID YOU KNOW?

Our PTA now has a PTA Broadcast group. Do let school know if you would like to join and your details will be passed on to the PTA Chair! Thank you!

# PTA NEON DAY

To celebrate the end of a long dark January we are having a bright and colourful day to cheer us all up! Wear your best NEON gear to brighten up our school on Friday 30<sup>th</sup> January (£2.00). We can't wait to see everyone's outfits!



## Zen Den

Our Zen Den is taking shape but what will it be used for?



- Extra learning and break out space for both Primary 4 classrooms
- Reading Groups
- Lunch time picnics
- Working with an assistant
- Time to spend with friends if the playground feels a bit loud
- An extra safe space for Sleepy Hollow after school hours
- And anything else we can think of...

